

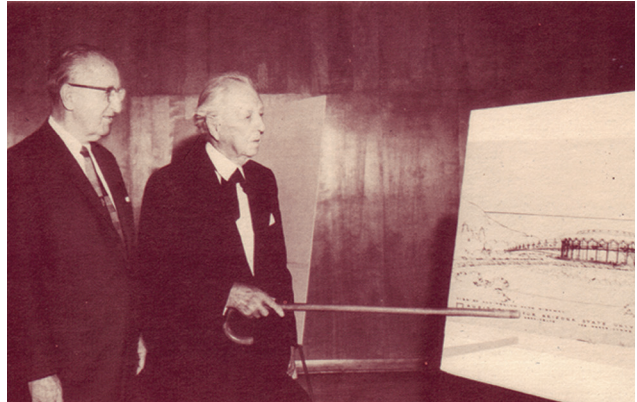
Celebrating 60 years



60

1967

Andy Warhol lectures at ASU Gammage.



1957

ASU President Grady Gammage has a vision for a performing arts auditorium at the university and calls on close friend and famed architect Frank Lloyd Wright to assist with the project.



1962

Grady Gammage, Jr. breaks ground for ASU Gammage.

1959

After Wright and Gammage pass, Wright's most-trusted aide, William Wesley Peters, brings the plans to finished form.

1964

The first Broadway production is CAMELOT.



1964-1974
David Scoular is Managing Director.

1968

Ray Charles performs for the first time at ASU Gammage.

Senator Al Gore and Gerald Ford debate.



Ray Charles. University Archives, Arizona State University Libraries

Sept. 18, 1964

Construction of the \$2.46 million building is completed in 25 months. Conductor Eugene Ormandy leads the Philadelphia Orchestra on opening night.



Philadelphia Orchestra At Gammage Memorial Auditorium Sept. 18

1969

Alvin Ailey American Dance Theater's first performance.

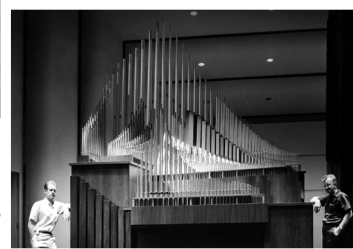
Johnny Cash performs for the first time.



the Æolian-skinner organ

ASU Gammage is among just a few places in the United States that is home to an Æolian-Skinner pipe organ.

The Æolian-Skinner organ, installed in 1965 at Gammage, was generously gifted by Mr. and Mrs. Hugh W. Long at a cost of \$100,000. Featuring 870 cathedral-style pipes, it debuted with a gala recital by Dr. Alexander Schreiner of Salt Lake City. Charles Brown, appointed university organist in 1966, began student noontime concerts. Initially used for classes and recitals, it now hosts special and unique events.



1970

Neil Diamond and B.B. King perform back-to-back.

1972

Senator Carl Hayden's funeral is held at ASU Gammage.

1975

Bruce Springsteen performs following his album, "Born To Run."

1977

Steve Martin is one of the first stand-up comedians to perform.

Billy Joel's first performance.

1971

James Taylor performs after his hit song, "You've Got a Friend In Me."

1974-1979



Warren Summers is Managing Director.

1976

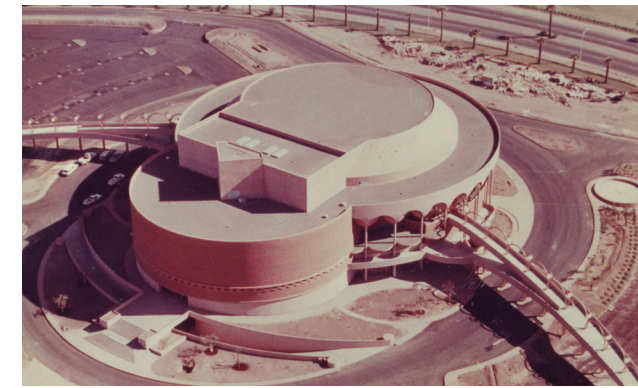
A Star is Born scenes filmed at ASU Gammage.



1976 A Star is Born with Kris Kristofferson and Barbra Streisand.

1978

Bette Davis' only appearance.



1979-1984



Miriam Boegel is Executive Director.

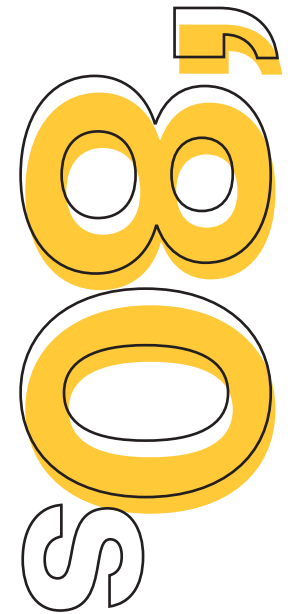
1985

Building is placed on the National Register of Historic Places.

1989

CATS premieres.

25th Anniversary with a performance by Itzhak Perlman.



1984-1991



Jim O'Connell is Executive Director.

1987

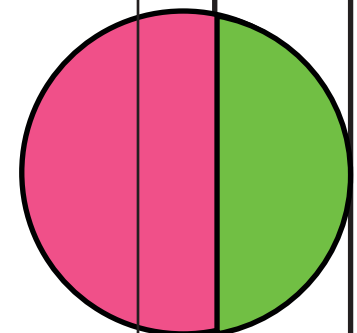
Whoopi Goldberg performs her one-woman act.

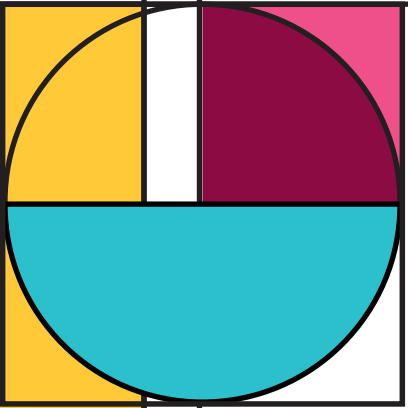


Photos by Charles R. Conley Photographs. University Archives, Arizona State University Libraries

ASU Gammage as the world's stage

On January 29, 1972, American politics came together for the funeral of Arizona Senator Carl Hayden. Speakers included former rivals for the presidency, President Lyndon B. Johnson and Senator Barry Goldwater.





1991

LES MISÉRABLES premieres.



1992

Colleen Jennings-Roggensack is named Executive Director; establishes **Connecting Communities™** mission.

1992

“Beyond Broadway” (now called Beyond) series begins.

Partners with Pace Theatricals for the Broadway Series.

1993

Closed for steel work improvements for THE PHANTOM OF THE OPERA.

1994

Colleen Jennings-Roggensack serves on the National Council on the Arts.

Miami City Ballet premieres a new work.

DANCERS OF THE DREAMING festival at the Salt River Pima-Maricopa Reservation.

THE PHANTOM OF THE OPERA premieres for a 10-week run.



1995

ANGELS IN AMERICA premieres.

1996

World Premiere of Donald Byrd's THE HARLEM NUTCRACKER.

Colleen Jennings-Roggensack serves on Super Bowl committee and coordinated the first ever Super Bowl concert series.

Pina Bausch's NUR DU (ONLY YOU) premieres.



1997

Orchestra shell is renovated to be able to be moved off stage in order to accommodate larger Broadway productions coming to ASU Gammage.

1999

Olympia Dukakis joins Margaret Jenkins Dance Company for the Arizona Premiere of a new work called TIME AFTER.

1998

Philip Glass performs MONSTERS OF GRACE.

Nearly 3,000 attend Senator Barry Goldwater's funeral at ASU Gammage.



Photos by Tim Trumble



ASU 1996



Pina Bausch. Photo by Wilfried Krüger



Colleen Jennings-Roggensack and the chandelier from THE PHANTOM OF THE OPERA at ASU Gammage. Photo by Tim Trumble



“Hosting a presidential debate is an honor of great magnitude for Arizona ... It shows that Arizona is a significant emerging national player in politics.”

—GOVERNOR JANET NAPOLITANO

2000

ASU Gammage supports playwright Lane Nishikawa to produce *GILA RIVER*, a play about Japanese internment camps.

2002

ASU Gammage hosts the investiture of Dr. Michael Crow as the 16th President of Arizona State University.

2004

ASU Gammage hosts Bush-Kerry presidential debate.

ASU Gammage Residency Artist Daniel Roumain begins his residency.

2006

ASU Gammage's commission of Trisha Brown and Bill T. Jones' motion[®] premieres in Monaco.

2007

Residency Artist Anne Bogart performs *HOTEL CASSIOPEIA*.

2011

Stephen Hawking lectures as part of ASU Origins Project.

Residency Artist Bill T. Jones begins his residency.

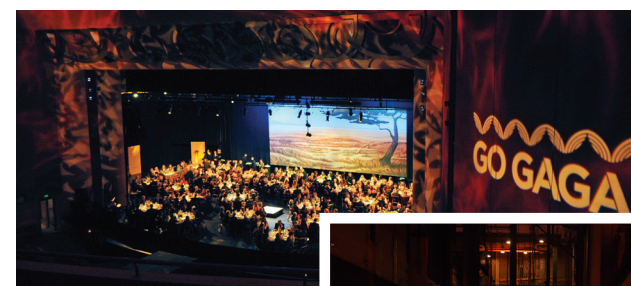


Photo by Aaron Lavinsky

2012

ASU Gammage hosts its first-ever Golden Gammage Gala (GO GAGA).

THEN: 2013 Golden Gammage Gala. Photo by Tim Trumble



NOW: 2024 Gammy and Jerry Awards. Photo by Tim Trumble



2014

ASU Gammage kicks off its 50th Anniversary season.

2018

HAMILTON premieres and breaks on-sale record in one hour.

2013

Residency Artist Aaron Landsman begins with *APPOINTMENT*.

2017

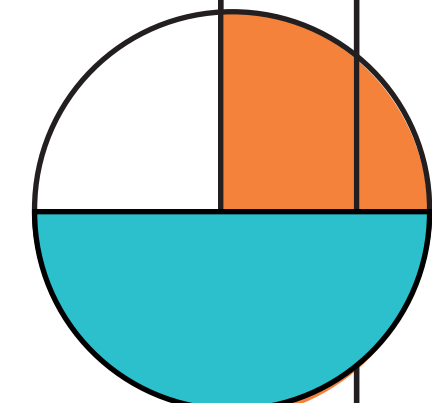
Renovations to add 88 women's bathrooms and elevators.

ASU Gammage receives Economic Driver and Business of the Year from the Greater Phoenix Chamber.

2020

Theater closed due to COVID 19 Pandemic and remained closed for 18 months.

2000s



2020 DRESSING ROOM RENOVATIONS GENEROUSLY DONATED BY:

Ronald H. Harten
William and Susan Ahearn

And friends

Lee Bowman
 Carol S. Barmore

• • • • •

Reginald M Ballantyne III
 Kallidas & JD Madhavpeddi Foundation
 Barbara and Barry Zemel
 Gretchen Wilde



2021

Theater reopened with HAMILTON.
 Dressing rooms updated thanks to donors.

2022

ASU Gammage undergoes major stage renovation.

2023

LES MISÉRABLES breaks 1 week record in sales, selling out.
 Disney Musicals in Schools launches in four Title I schools.



2024

Executive Director Colleen Jennings-Roggensack awarded Tony Honors for Excellence in Theatre.

